

# ROCHESTER CHARTER CHAPTER

Rochester, Minnesota

# CHAPTER NEWS



Volume 44 Issue 3

October 2011

## ABWA LEADERS NEWLY ELECTED AT 2011 NATIONAL CONFERENCE



**National President**  
**Tina Gandy**



**District III Vice President**  
**Jennifer Childress**



2011 American Business Woman of ABWA, Carolyn Parks, presented the new 2012 American Business Woman, **Patti Bigger**

- National Vice President—Tina Ackles
- National Secretary-Treasurer—Pattie Vargas
- District I-VP—Carolyn Parks
- District II-VP—Lorie Burch
- District IV-VP—Eileen Royer
- District V-VP—Paula Clutter
- District IV-VP—MyChelle Andrews



<i>Inside this issue:</i>	
President's Message, Vision Statement, Chapter Officers	2
Agenda, Menu, Invocation & Benediction	3
Roster Changes, Committee Chairs, Calendar Dates	4
Best Practices, Birthdays & Anniversaries	5
New Member Profiles	6
Correspondence, Ads	7
Committees Reports, Fundraising Activities	8-9
September Meeting Notes	10
September Treasurer's Report, National Conference	11
October Board Report	12
Dist III-VP Final Message	13
Contact Information, Proud Code of Conduct	14

**ABWA** — *Changing women's lives . . . one woman at a time.*

## ABWA MISSION STATEMENT

The mission of the American Business Women's Association is to bring together businesswomen of diverse occupations and to provide opportunities for them to help themselves and others grow personally and professionally through leadership, education, networking support and national recognition.



## PRESIDENT'S MESSAGE



The Chapter Vision Statement of the Rochester Charter Chapter of the American Business Women's Association is to embrace and celebrate women's challenges and accomplishments through friendship and community and professional support.

### Chapter Officers

2011—2012

- President—  
Jennifer Gowin
- Vice President—  
Sharon Dennis
- Treasurer—  
Barb Hawn
- Recording Secretary—  
Anna Matetic
- Corresponding Secretary—  
Della Krug

### Fall is officially here!

Fall is here. We are a few months into the new ABWA year, and we have the momentum going to make it a GREAT year! Jane Nicklay traveled to Texas for the ABWA National Women's Leadership Conference; I am looking forward to hearing about her experience and anything new in our organization at the October meeting.

Each year we have a fall membership campaign where we hold a special event to promote our organization in hopes to grow our chapter. This year we are going to host a "Ladies Night" at Leashes & Leads. Start spreading the word to "save the date" -Wednesday, November 9<sup>th</sup>! The membership committee will be following up with more specific details to help us promote this event, so start thinking of who you would like to invite to share in ABWA.

The fundraising committee has also been busy thinking of some new ideas to compliment our two major fundraising events (gift wrapping and the golf

tournament) and they have come up with a wonderful idea that helps our member's promote their own businesses as opposed to going to a fundraising company outside of our organization—it's a "win—win"! The fundraising information will be available at the October meeting. Gift wrapping at Hunt Drug will also be right around the corner. Please be prepared to help with as many shifts as you can. We have had the privilege of wrapping gifts for Hunt Drug for several years—they pay us an hourly rate AND as "employees" we get a nice discount after our shifts!

Our other committee chairs are continuously working hard to help our chapter grow and become more recognized in our community. Thank you again to those of you who signed up to help our committee chairs by volunteering your time and energy!

### Jennifer Gowin

jgowin@premierbanks.com  
2011—2012 President  
Rochester Charter Chapter  
507-285-3706  
507-990-2516



# AGENDA FOR OCTOBER 17TH MEETING

- 5:15 Sign In & Networking
- 6:00 Welcome, Invocation, Pledge, Mission Statement, Chapter Vision Statement
- 6:05 Member & Guest Introductions
- 6:15 Dinner
- 6:45 “Hats Off Award” —Jerrie Hayes
- 6:47 New Member Induction: Heather Lindquist
- 6:48 Vocational Speaker:
- 6:54 Acceptance of September Treasurer & Meeting Reports
- 6:55 Professional Development - Margaret Heise
- 7:00 ABWA National Women’s Leadership Conference recap—Jane Nicklay
- 7:05 Program—**WIN Professional Development module**  
We encourage everyone to log onto WIN.
- 7:50 Door Prizes and Benediction

**Menu**

**Teresa’s Lasagna**

Layers of Mozzarella Cheese, Pasta, fresh Spinach, and homemade Bolognese (meat) Sauce.

Served with a House Salad with assorted Dressings, Breadsticks, and a Cookie.

**RSVP**

**Joanne Tunnyhill**  
joscocoa@hotmail.com  
259-1416  
by Wednesday,  
October 12



## INVOCATION

## BENEDICTION

Lord, in the quiet of this hour,  
 We come to Thee for wisdom, and for power;  
 To view Thy world through only love-filled eyes;  
 To grow in understanding; to be wise,  
 And sure to see Thy guiding Light;  
 And, thus, to know each other as Thou knowest us.

Amen

O Guiding Spirit, Guardian of our days,  
 Be with us as we go our separate ways,  
 Help us to feel those thoughts that lift and bless;  
 To know a closer bond of friendliness;  
 To see Thy beauty always—every day;  
 Translated into living—this we pray.

Amen

## Roster Changes

### Address Change:

*Tara Cassmann  
245 1st Avenue SW  
Harmony MN 55939*

### Non-Renewed:

*Sharon Kramer*

Thank you for your years of service to ABWA! You will be missed greatly, Sharon!

### Standing Committee Chairs (2011—2012)

- Fundraising—  
Shaun Hambrugen
- Hospitality—  
Joanne Tunnyhill
- Membership—  
Shelly O’Groske
- Newsletter—  
Jane Nicklay
- Professional Development  
Margaret Heise
- Program—  
Jerrie Hayes
- Publicity—  
Denise Stegall

## DATES FOR YOUR CALENDAR

### October 11

**Hospitality Committee Meeting -**  
Joanne Tunnyhill’s home  
(2819 25th St NW)  
5:30pm  
259-1416, if you get lost!

We will be planning the Holiday Party and need all committee members’ help!

### October 17

**Chapter Meeting—**  
Ramada Hotel & CC  
5:15 Networking  
6:00 Dinner

Program: **Win Professional Development module**

Vocational Speaker  
National Conference Recap

### November 7

**Board Meeting—**  
Premier Bank  
5:35 pm

### November 9

**Ladies Night Out**  
**5:30—8:00**  
**Leashes & Leads**

**Wine & Beer Tasting**  
**By Apollo Liquor**

Appetizers  
Silent Auction  
Vendor Tables  
Door Prizes

Invite guests to learn about ABWA.

### November 21

**Chapter Meeting—**  
Ramada Hotel & CC  
5:15 Networking  
6:00 Dinner

## FUTURE MEETING DATES

### Board Meetings

Premier Bank—5:35 pm  
421 1st Avenue SW

(None in December)  
January 3, 2012 (Tues)  
February 6, 2012  
March 5, 2012  
April 2, 2012  
May 7, 2012  
June 4, 2012  
July ?? (Transition)

### Membership Meetings

Ramada Inn & CC—5:15 to 8:00 pm  
1517 16th Street SW

December 5, 2011 - Holiday Party  
January 15, 2012  
February 20, 2012  
March 19, 2012  
April 16, 2012 - Awards Banquet  
May 21, 2012  
June 18, 2012  
July 16, 2012 - Annual Picnic in another location

# BEST PRACTICES SCORECARD

1. 50 members
2. 10 members complete Member Interest Survey
3. Submit slate of officers and pay \$100 administrative fee
4. Tax Exempt Status and tax return filed-Dec 15th
5. Select Woman of the Year
6. Nominate Top Ten candidate-May 15
7. Contribute to SBMEF
8. Assign officers and chairs on WIN roster
9. Vote on Standing Rules and put in WIN
10. Post Vision Statement on WIN
11. Officers complete *Striving for Best Practices* Course
12. Create a Business Plan and put in WIN
  - Team Charter
  - Biographical Sketch of Officers
  - Community Competitors
  - Comparison Inventory
  - Member Interest Surveys
  - Key Result Areas
  - Mission Driven Goals
  - Vision Statement
  - Budget
  - Executive Summary
13. 9 professional development programs (one is a WIN overview)
14. 25% of budget is for team curriculum and programming
15. Sponsor 6 members to attend Conferences (at least one must attend National)
16. 6 newsletters uploaded to team library on WIN



- Mikki Wirt  
October 2
- Donna Lun  
October 17
- Amanda Jacob  
October 26
- Joanne Tunnyhill  
November 2
- Rhonda Berg  
November 3
- Becky Maher  
November 18

## Happy ABWA Anniversary

- October**
- Jane Nicklay—22 years
  - Shelly O’Groske—9 years
  - Carol Renken—2 years
  - Jennifer Gowin—2 years
  - Mikki Wirt—1 year
  - Jessie Rasmussen—1 year
  - LaDonna Miller—1 year
  - Jeanie Unger—1 year
  - Amanda Wolkenhauer—1 year
- November**
- Donna Lun—19 years
  - Joanne Tunnyhill—4 years
  - Jerrie Hayes—1 year

# BE A NER!

Please use this form when requesting reimbursement from the treasurer.

### Reimbursement Form

Remit to: \_\_\_\_\_ Date: \_\_\_\_\_

Item Purchased: \_\_\_\_\_ Cost: \_\_\_\_\_

Authorized By: \_\_\_\_\_ Budget Line: \_\_\_\_\_

Paid by (Treasurer): \_\_\_\_\_ Check No.: \_\_\_\_\_ Date: \_\_\_\_\_

Instructions: (1) Complete form. (2) Staple receipt(s) to request form. (3) Submit to Treasurer.

## NEW MEMBER PROFILES



**Heather Muras**

Hello! I am the owner of Mosaic Family Therapy, LLC., in Rochester, MN. I am a Licensed Associate Marriage and Family Therapist and a Registered Nurse who has worked in a private counseling practice for the past 1 1/2 years. My therapy practice includes work with individuals, couples, and families around a variety of concerns including relationship issues, depression, anxiety, grief and loss, adolescent transition issues, and spiritual concerns.

As a psychotherapist and registered nurse, my approach to therapy includes being attentive to people as a whole. I am passionate about helping people feel empowered and connected in their relationships. My experience and education provide added insight into how physical, emotional, cognitive, spiritual, and relational problems impact a person's well-being.

My husband and I have been married for 19 years, and have lived in Rochester for 16 of those years. We have the privilege of being the parents of two fun teenagers. Our family enjoys volunteering together in the toddler nursery at our church. I enjoy going on walks, painting, spending time with my family, and having coffee with friends.

I joined ABWA after a friend encouraged me to visit the evening group with her. I found this group welcoming and encouraging. In the short time that I have been a member, I have had the honor of getting to know women who have helped me be a better, more intentional, business woman. I hope to be able to encourage and support other women and continue to develop professionally through my membership and involvement in ABWA.



**Netta Putzier**

Netta Putzier has been the owner of Rochester Feed & Country Store (name changed) for the past 15 years. After studying Agricultural Business at Rochester Vo-Tech, she worked for Purina Mills before opening Rochester Feed & Pet Supply in 1996.

Netta's husband, Vince, owns Putzier Trucking & Grain. They live in the country north of St. Charles. Their daughter, Jennifer and her husband, Ryan McCanna live in Oswego IL.

Her goals in life are to "enjoy life to the fullest; don't sweat the small stuff; and remember what goes around, comes around." She loves to sew, garden, read, and visit with people.

Netta volunteers a lot with many pet adoption groups; and with Ride-ability, who works with people who have challenges in their lives.

She decided to join ABWA because it sounded like fun and would be a way to get to know other women in business. She expects to have a good time and meet new friends.

# CORRESPONDENCE

Dear ABWA Members,

Thank you for 31 wonderful years in your great organization. I have met many wonderful people and have many fond memories from my years with your group.

However, I feel it is time to fold my tent and call it a day. My health has kept me from fulfilling my obligations as a member.

Thank you again for all the cards and flowers and friends.

As ever,  
Sharon Kramer

Secret Pal,

Thank you for the cute Halloween towels and candle. They are already adorning my kitchen. Hope you are having a great fall.

*Margaret Heise*

This song was used as a theme for the 2011 ABWA National Women's Leadership Conference in Texas. It was suggested that it be used for recruitment events.

## ABWA (to the tune of Y.M.C.A.)

WOMEN--

We are gathered today, we are WOMEN-  
A-B-W-A Business WOMEN--  
From the whole USA, we are  
ON OUR WAY AND HAPPY

WOMEN--

Of all ages and types, we are WOMEN--  
Of all colors and stripes, Business WOMEN--  
Sharing passions and gripes, We are  
HERE TO HAVE A GOOD TIME...

(It's fun to be here with)

A-B-W-A! A-B-W-A!  
You can make some new friends,  
You can make some new deals,  
You can really kick up your heels!

(It's fun to be here with)

A-B-W-A! A-B-W-A!  
'Cause connecting is fun,  
And it lowers our stress  
On the ladder to big success!

NETWORK--

Is what we like to do, in our CHAPTERS--  
And express Networks too,  
Now we're JOINING--  
And we say "Howdy-Do"  
To our COLLEAGUES HERE IN TEXAS

WOMEN you can really admire, we are  
WOMEN who know how to inspire other  
WOMEN to climb higher and higher,  
There's JUST NO KEEPING US DOWN!

(It's fun to be here with)

A-B-W-A! A-B-W-A!  
You can make some new friends,  
You can make some new deals,  
You can really kick up your heels!

(It's fun to be here with)

A-B-W-A! A-B-W-A!  
'Cause connecting is fun,  
And it lowers our stress  
On the ladder to big success!  
A - B - W - A!!



Healthy Rewards  
at  
Amazing Massage

Purchase 5 massages and get the 6th one Free.  
Every body deserves a massage ...treat yours today.  
Contact Denise Stegall, CMT at 507-202-1034  
Visit my website and take a virtual tour at  
[www.youramazingmassage.com](http://www.youramazingmassage.com)



## Fall Bazaar & Expo

Christ the King Catholic Church  
202 4<sup>th</sup> St NW, Byron

ABWA Members - 10% off Jockey orders  
50-75% off Cash & Carry Items!

Sat. Oct. 29th at 9:00-3:00

Shelly O'Groske, Ind. Comfort Specialist  
507-951-5217 or shelly@ogroske.com

<http://www.myjockey2p.com/shellysfunfashions> *Person to person*

JOCKEY

## COMMITTEES REPORTS

### PROFESSIONAL DEVELOPMENT - CHAIR: Margaret Heise



The Professional Development Committee met on Thursday, September 29<sup>th</sup>. We discussed the upcoming year and distribution of scholarship funds and grants. There is also money in our budget, per the standing rules, to sponsor registration fees for a number of members to attend both the National Leadership Conference and the Spring Conferences.

This year, we would again like to offer a **“Professional Development Day”** for our members. It will likely be in February, to break up the long winter days. We would hold it on a Saturday morning and cover three topics. One topic that we discussed was finding someone to talk to us about “smart” phones. We are looking for two other topics that would be of interest to our members. Please talk to either Margaret Heise or Diane Welch with any ideas you have. We plan to have the committee meet right after the October 17<sup>th</sup> meeting. Also, if you are interested in participating on this committee, we could use a few members! Join us.

### MEMBERSHIP – CHAIR: Shelly O’Groske

#### MARK YOUR CALENDARS & SAVE THE DATE

**ABWA Ladies Night Out with Wine & Beer Tasting by Apollo Liquor**  
Wed. Nov. 9th 5:30-8:00 at Leashes & Leads

There will be Appetizers, Silent Auction, Door Prizes & Vendor Tables. Everyone is asked to invite at least one guest to the event to learn more about what ABWA has to offer!

Members are able to have a table for \$20 to promote your business. A registration form and more info will be sent via email and will be available at the November meeting.

We will accept donations for the silent auction and door prizes from members and any connections you may have.

Contact Shelly O’Groske, Kim Radke, Sharon Dennis, or Jennifer Gowin if you have questions.

### PUBLICITY – CHAIR: Denise Stegall

The Publicity Committee discussed using the Chamber Member to Member promotion page to get more exposure for ABWA. This ad will run in their next publication.

ABWA ( American Business Women's Association)

Rochester Charter Chapter

is offering Chamber members \$5 off the cost of dinner

for our November meeting, Monday, November 21, 2011

Dinner and professional program from 5:30-8pm at the Ramada Hotel

RSVP to Joanne Tunnyhill at [joscocoa@hotmail.com](mailto:joscocoa@hotmail.com)

### NEWSLETTER – CHAIR: Jane Nicklay

**Member Ads:** Business card sized ads in our chapter newsletter are \$5 a time. Payment and print copy must be received by the Wednesday after the Board meeting for inclusion each month. These ads are for members only and may include your own business, a business you work for, or organizations or activities for which you volunteer or are involved in.

## COMMITTEE REPORTS

The Fundraising Committee met on 09/15/11. Shaun Hamburgren, Jane Nicklay and Joanne Tunnyhill were present. They discussed new ideas for a successful 2011-2012. A decision was made to offer Rochester Charter Chapter ABWA members an opportunity to submit a contract for the fall fundraiser. Jane Nicklay will be chairing the Hunt's Drug gift wrapping. We discussed the Golf Tournament and how to be successful this year. Professional Development Chair, Margaret Heise, and Shaun Hamburgren, Fundraising Chair, are going to discuss a program that would be educational and also a fundraiser.

**- FUNDRAISING  
CHAIR: Shaun Hamburgren**

## FUNDRAISING ACTIVITIES



One of our favorite, repeat fundraisers will begin on November 4th and run through Christmas Eve at Hunt Drug & Gift in the Northbrook Shopping Center on North Broadway. They have invited us back to assist them in wrapping gift items. A work schedule has been worked out and will be available at the October meeting for members to sign up.

Most shifts are two to two and a half hours in length. Bring your schedule so you know when you are available to help. Our chapter is paid \$7.25 per hour for the time we are there and members receive a 25% discount on items purchased while working their shift.

We will offer training for all members who volunteer for the first time. All supplies are furnished. Just wear your ABWA name badge and a BIG SMILE! Tips will also be accepted.



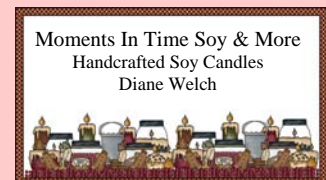
### \$10 U-Bake COUPON

We will be selling \$10 coupons for U-Bake of Rochester, and \$3 will be kept for chapter, a 30% profit. Customers who use the coupons can choose any items from the store, from frozen pies and cookies to Minnesota products. They will be available until our January meeting and will make great holiday gifts. Barb Hawn and Dianna Baker will be available at our October meeting to provide more information and to distribute the coupons for sale.



Diane Welch has a fundraising plan for her Moments in Time Soy & More products. She will have order sheets for her hex candles, tarts, fire starters, air freshies, and hand lotion at our October meeting. Our ABWA profit will be 33% to 50% on all the items we can sell. Sales will be concluded in November and orders will be available 2-3 weeks

later. She will have a table display of her products at the next meeting, along with more information and details on this fundraising opportunity.



## NOTES FROM SEPTEMBER 19TH MEETING

### Welcome

20 members and 1 guest attended the September meeting at Ramada Hotel.

Following introductions of members and guests, a sign up list for committees was circulated. Joanne Tunnyhill encouraged every member to be on at least one of the standing committees to become involved in our chapter.

### Recognitions

Jane Nicklay presented the **Hat's Off Award** to **Jerrie Hayes** this month because of her willingness, as a new member, to chair the Program committee, and the progress she has already made to insure a great season of programs for us.

New members inducted into membership in our chapter were:

**Rhonda Berg**, sponsored by Jane Nicklay and mentored by Joanne Tunnyhill

**Kathleen Rossello**, sponsored and mentored by Jane Nicklay

Our **Vocational Speaker** was **Rhonda Berg**, who spoke about her career path from going to Iraq with the National Guard to becoming a dentist.

### Business Items

The treasurer's report and minutes of the last meeting were accepted.

The **Standing Rules**, presented by Chair, Sharon Dennis, were approved.

### Program

Jerrie Hayes presented our speaker, **LuAnn Buechler** of PMC Events, who presented "Passion and Focus in the Workplace". She encourages each of us to find our passion in life to obtain happiness, love, and prosperity.

### Closing

Door Prizes winners were: Kathleen Rossello, Terri Ebling, Nancy Peterson, and Sonja Hallworth (guest). Thank you to **Shelly O'Groske** of *Jockey Person to Person*, **Denise Stegall** of *Amazing Massage*, and **Kris Dicke** of *Ryan & Grinde*, and *ABWA National* for donating prizes.

Left: Rhonda Berg,  
Vocational Speaker



Right: Jennifer Gowin,  
President, inducting  
new members (holding  
flowers): Kathleen  
Rossello and Rhonda  
Berg. Also pictured, are  
their Mentors, Jane  
Nicklay and Joanne  
Tunnyhill.



Left: Jane Nicklay is put-  
ting the Hat's Off pin on  
the new recipient, Jerrie  
Hayes.



Right: LuAnn Buechler,  
Program Speaker



# TREASURER'S REPORTS FOR SEPTEMBER 2011

<b><u>Checking Account Beginning Balance—September 1st</u></b>	<b>\$ 5886.05</b>
<b>Income</b>	
Newsletter Ads	\$ 25.00
Dues: Nicklay, Stegall, Daly	\$ 90.00
Meals—September	\$ 414.00
<b>Total Income</b>	<b>\$ 529.00</b>
<b>Expenses</b>	
Apache Catering: Meals	\$ 410.04
<b>Total Expenses</b>	<b>\$ 410.04</b>
<b><u>Checking Account Balance—August 31st</u></b>	<b><u>\$6005.01</u></b>

<b><u>Saving's Account Balance</u></b>	<b>\$2009.09</b>
<b><u>September 1st, 2011</u></b>	
Interest	\$ .08
<b><u>September 30th, 2011</u></b>	<b>\$2009.17</b>
*****	
<b><u>Chapter Dues Due October 31—</u></b>	
Jennifer Gowin, LaDonna Miller, Shelly O'Groske, Carol Renken, Jessie Rasmussen, Jeanie Unger, Mikki Wirt, Amanda Wolkenhauer	
<b><u>Dues Due September 30—</u></b>	
Jerrie Hayes, Donna Lun, Joanne Tunnyhill	

## 2011 ABWA NATIONAL WOMEN'S LEADERSHIP CONFERENCE—IRVING TEXAS



National Publishing Committee, Bessie Poole, Denise Pineda, & Jane Nicklay. Their minutes of the annual meeting will be published in the next issue of *Women in Business* magazine.



48 Best Practicing Teams celebrated on the runway in their red dresses.



Brinnon and Marks entertained us at the Best Practices Ceremony and the Cowgirl Princess Gala



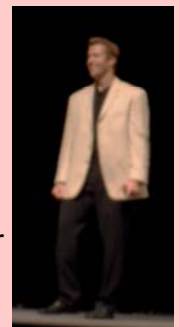
Jane Nicklay and Tina Gandy exchanged teacups at the Hand of Friendship Luncheon honoring Inner Circle & 25 Year members.



Cowgirl Princess Gala Banquet & Entertainment  
Jane Nicklay sat with her roommates and members of their Kansas City Chapter.

### Cary Mullen Olympic and World Cup Ski Champion

still holds the World Downhill Speed record for skiing 97 mph in Kitzbuhel, Austria



Cary Mullen's keynote address, *The Champion Within*, was very inspiring. His "Lunge Forward" approach includes these steps:

Identify what's preventing you from executing optimally.

Decide your Risk to Reward Ratio.

Lunge Forward-Train your actions and reactions by lunging into your fear.

Enjoy the challenge, the speed, the process.

*Prepare-execute-assess-rejuvenate*

## BOARD MEETING—OCTOBER 3, 2011

TOPIC	DISCUSSION/OUTCOME
<b>President's Welcome by Jennifer Gowin</b>	5:35 pm—Premier Bank, downtown Rochester Attending: Jennifer Gowin, Jerrie Hayes, Shelly O'Groske, Jane Nicklay, Shaun Hamburgren, Margaret Heise, Joanne Tunnyhill, Sharon Dennis, Della Krug, Denise Stegall, Anna Matetic Absent: Barb Hawn
<b>Executive Board Reports:</b>	<p><u>Vice President</u>— <b>Sharon Dennis</b></p> <p><u>Recording Secretary</u>— <b>Anna Matetic</b> attended by speaker phone. She has created folders on WIN to upload Board and meeting minutes to our WIN library.</p> <p><u>Treasurer</u>— <b>Barb Hawn</b> was ill.</p> <p><u>Correspondence Secretary</u>— <b>Della Krug</b> received a resignation card from Sharon Kramer.</p>
<b>Committee Reports:</b> <u>Fundraising/Advertising:</u> <b>Shaun Hamburgren</b>	<p>Jane Nicklay will chair the Gift Wrapping at Hunt Drug this year. She will have signup sheets at the October meeting.</p> <p>Four members have submitted fundraising plans. The committee will determine which to use at this time and offer them a display table at the October meeting to kick-off their fundraisers.</p>
<u>Membership</u> — <b>Shelly O'Groske</b>	<p>The Fall Membership Campaign will be a Ladies Night Out at Leashes &amp; Leads on November 9, 5:30—8:00pm. Feature include: wine &amp; beer tasting by Apollo Liquor, appetizers, member vendor tables for \$20, silent auction and door prizes. Members are asked to bring guests and information on ABWA will be given during the evening. More information to follow.</p>
<u>Professional Development</u> — <b>Margaret Heise</b>	<p>A Saturday morning in-service is being planned for February. It will include three topics, such as "smart" phones.</p>
<u>Program</u> — <b>Jerrie Hayes</b>	<p>Our October program will be one of the Team Tools training modules from WIN. We hope to encourage all members to get logged on to WIN.</p>
<u>Publicity</u> — <b>Denise Stegall</b>	<p>Denise will get information to the Chamber of Commerce for a Member to Member ad to help promote our chapter's visibility.</p>
<u>Hospitality</u> — <b>Joanne Tunnyhill</b>	<p>The menu for this month is Lasagna.</p> <p>Jennifer Gowin is arranging for an outing which would include volunteering at Channel One followed by socializing at Whistle Binkies South.</p>
<u>Newsletter</u> — <b>Jane Nicklay</b>	<p>Member ads with a \$5 payment can be submitted anytime. Committee chairs are encouraged to provide information monthly for the newsletter to lessen reports at dinner meetings.</p>
<b>Other Business Items:</b>	<p>Jane Nicklay will report on the recent National Conference in the newsletter and at the October meeting.</p> <p>ALL Board members need to complete the <i>Striving for Best Practices</i> module on WIN. Jennifer Gowin will email board members to arrange a time to continue working on the Chapter Business Plan.</p> <p>A lot of marketing materials seem to be placed on tables at meetings, sometimes causing clutter. It was suggested that we find a type of holder for these items to be put on each table at future meetings.</p> <p>Sharon Dennis would like our chapter to do more in the community to make ourselves known. Jennifer suggested volunteering at more events and non-profits in the community.</p>

# NANCY BALLENGER'S FINAL MESSAGE (DIII-VP)

American Business Women's Association

[www.abwa.org](http://www.abwa.org)

Leadership is understanding people and involving them to help you do a job. That takes all of the good characteristics, like integrity, dedication of purpose, selflessness, knowledge, skill, implacability, as well as determination not to accept failure. ~Admiral Arleigh A. Burke

This quote sums up my feelings as I write my farewell letter to the members of District III. When I was installed as District III Vice President on October 30, 2010, I thought I had an inkling of what would lay head in working with teams throughout the District.

My first task was to make a list of teams striving for Best Practices and reach out to the team Presidents. As I was focusing on these teams, I received a WINmail from a member in Spearfish, South Dakota asking for advice on how to recruit new members to their team of 19 and a possible visit to celebrate the chapter's 30<sup>th</sup> anniversary. A national officer had not visited that part of the district for years so I was very flattered that this team would reach out to ask for assistance.

As the months went on, I answered WINmails ranging from how to find a document in the WIN Library (hint- use the Knowledge Search feature), the difference between a Local Scholarship and the SBMEF Grant, what is a Business relevant program, to how to handle a disgruntled member. I became WINfriends with the Network Chapter in Lincoln, NE, Kansas Executive Express Network in Topeka, KS, Cedar Rapids Charter Chapter in Cedar Rapids, IA, Kansas City Express Network, Ad Astra in Topeka, KS, Rochester Charter Chapter in Rochester, MN, Renaissance Chapter in St. Louis, MO, and Pony Express Chapter in St. Joseph, MO along with the local chapters in the Kansas City area.

Each team that reached out to me had a common thread- a team President who is passionate about ABWA and wanted the best experience for their team members. I have made lasting friends with many of these members who I never would have come in contact with had I not taken a leap of faith two years ago by putting my hat in the ring to run for a National Office. And by the way, I do not work for ABWA National Headquarters. My real job is banking and my District VP job is strictly a volunteer position.

If you are thinking about running for District III VP this coming year or several years from now, you too will personally gain more than you could ever imagine.

Thank you for the support you have given me as your 2010-2011 District III Vice President.



*Nancy Ballenger*  
District III Vice President

**ABWA Mission Statement**

To bring together business women of diverse occupations and to provide opportunities for them to help themselves and others grow personally and professionally through leadership, education, networking support, and national recognition.

**Rochester Charter Chapter—#4089  
American Business Women's Association  
P. O. Box 6903  
Rochester MN 55903**

Newsletter Editor:

Jane Nicklay  
5414 Kensington Lane NW  
Rochester MN 55901  
507-285-9622  
bnicklay.pru.mn@juno.com

**Rochester Charter Chapter Website:  
[www.abwarochester.org](http://www.abwarochester.org)**

**National ABWA Headquarters:**

11050 Roe Avenue, Suite 200  
Overland Park KS 66209  
913-732-5100  
800-228-0007  
abwa@abwa.org

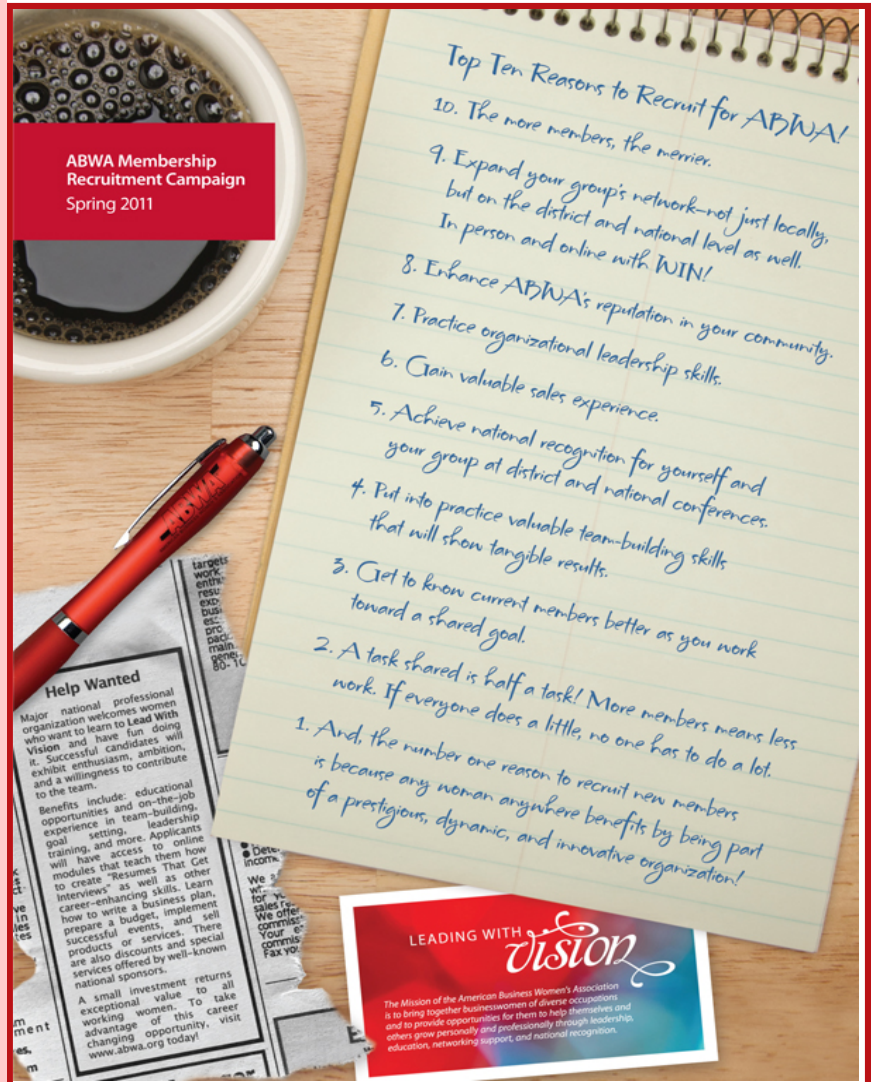
**National ABWA Website:  
[www.abwa.org](http://www.abwa.org)**

**National Officers:**

President: Tina Gandy  
Vice President: Tina Ackles  
Secretary/Treasurer: Pattie Vargas

**District III Vice President:**

Jennifer Childress, Des Moines IA  
jen@patinaesprit.com



## ABWA'S PROUD CODE OF CONDUCT

1. All members will serve as goodwill ambassadors for the American Business Women's Association.
2. Members will not allow their personal beliefs and convictions to interfere with the representation of ABWA's mission.
3. Members will always treat their member colleagues, guests, vendors and sponsors with honesty, respect, fairness, integrity, responsibility, kindness, and in good faith.
4. Members will maintain compliance with ABWA National, Chapter and Express Network Bylaws.
5. Members will not use their personal power to advance their personal interests.
6. Members will strive for excellence in their professions by maintaining and enhancing their own business knowledge and skills, and by encouraging the professional development of other members.